

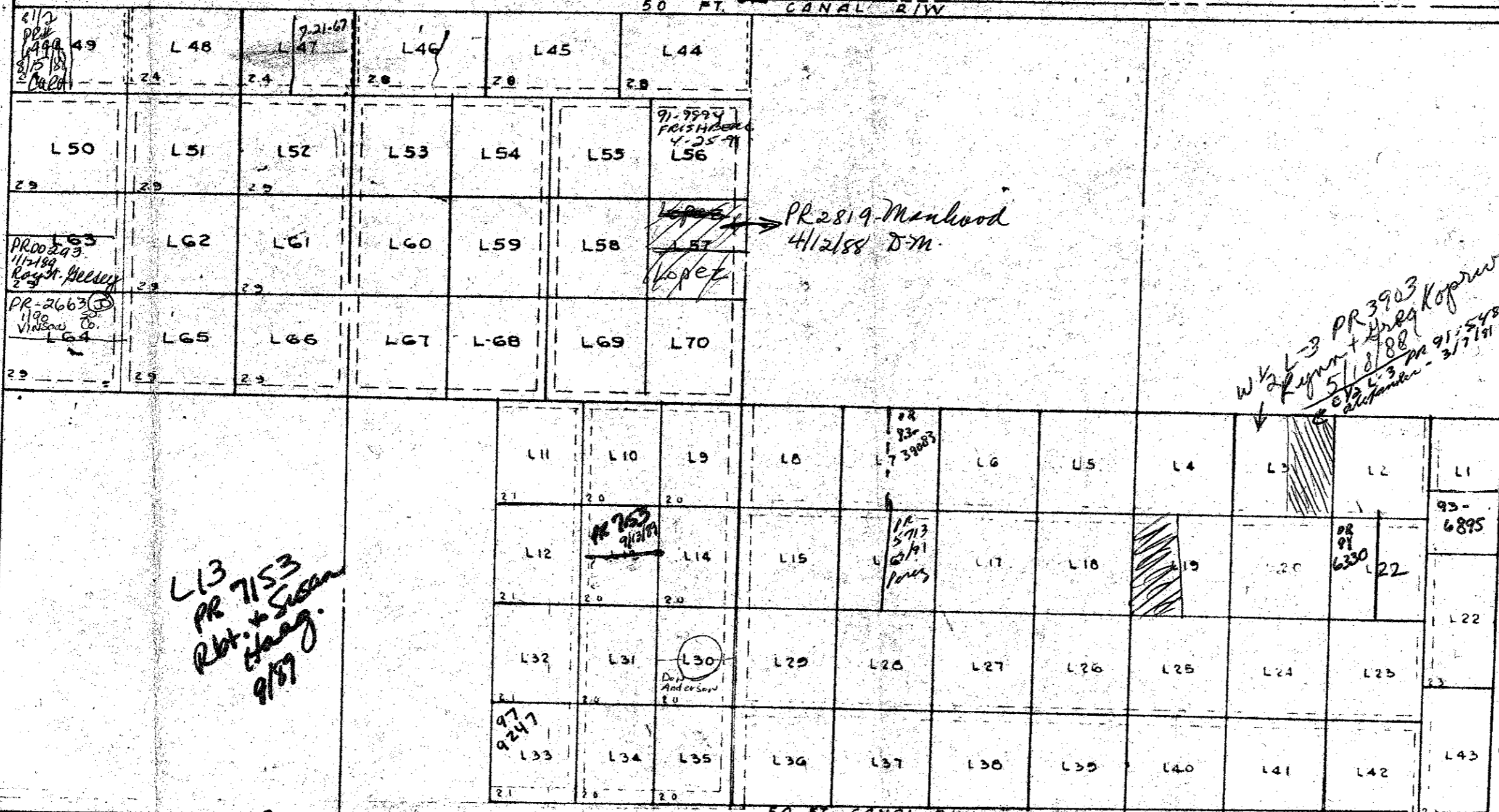
66' R/W RANDOLPH SIDING ROAD  
CANAL

50 FT CANAL R/W

6 5

12 7

200 FT R/W S. R. 7 JUPITER FARMS ROAD



L13  
PR 7153  
Rbt. + Susan  
Chang  
9/57

PR 2819 Manhood  
4/12/88 D.M.

PR 3903  
Kopyevich  
5/11/88  
3/7/88

PR 736  
4-77  
OK Barnard

GOOD WOOD  
ACRES

ur0348.1gr  
PB COUNTRY ESTATES 42-41-7 UNIT L

1. UNMARKED PARCELS CONTAIN 2.5 ACRES ±
2. PARCELS VARYING THEREFROM ARE MARKED WITH THE ACREAGE THEREIN
3. ALL ACREAGE VALUES ARE PLUS OR MINUS ROAD EASEMENTS & EASEMENTS FOR DRAINAGE ONLY

NAMED ROADS ADDED (LOCATIONS ARE APPROXIMATE) 1977

REVISED 7-17-67 ADDED LOTS L44 TO L70

BEING THE NORTH HALF OF THE NW 1/4 AND THE SOUTH HALF OF THE NE 1/4 AND THE EAST 1/2 OF THE SE 1/4 OF THE NW 1/4 OF SECTION 7, TOWNSHIP 41 SOUTH, RANGE 42 EAST,

### PALM BEACH COUNTRY ESTATES - SECTION "L"

PALM BEACH COUNTY, FLORIDA  
FOR PALM BEACH DEVELOPMENT AND SALES CO., INC.

*James Long*  
Plat 65/66  
Eng 6489

**E. SULKOFF & ASSOCIATES**  
ENGINEERS & SURVEYORS  
205 TENTH STREET  
LAKE PARK, FLORIDA 33403

JAN 21 1967  
ES  
1" = 400'  
1072-14